



Building for our Future



STRATEGIC PLAN 2025-2028



Our Journey

Since 1970 Renascent has been working to save lives through compassionate addiction and mental health treatment programs.

Renascent's unique strength comes from its compassionate and dedicated teams and deep expertise in abstinence-based, evidence-informed addiction treatment and 12-step facilitation. These strengths combined with treatment teams that have both professional expertise and lived experience make Renascent's programs uniquely valuable in the system.

A key challenge for Renascent through its lifetime has been bridging the gap between government funding and the high level of need and actual program costs. Due to flat funding, this issue has become more challenging for Renascent and the sector over time.

Over the years, Renascent has been innovative in developing alternate funding/revenues for treatment, in addition to increasing government funds to narrow this gap.

As we look to the future, we are committed to substantially grow funds and resources to develop our programs and ensure our programs are there for generations to come.

We strive for a bold vision where every person impacted by addiction can rebuild hope, healing and connection.

Renascent rescued me in the darkest time of my life...

*Building a sober community was something I never knew I needed. They let me know I wasn't alone in the battle. I give my life and recovery to Renascent. **SHAYE, RENASCENT ALUMNI***



Mission

To help save lives through compassionate addiction and mental health programs.



Vision

A future where every person impacted by addiction can rebuild hope, healing and connection.

Values



Compassion



Community



Collaboration



Lived Experience

Our Commitment to Diversity, Equity, and Inclusion

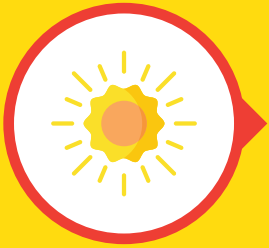
At Renascent, we are deeply committed to the principles of anti-oppression. This means actively working to understand, challenge, and dismantle the systemic barriers that contribute to inequity and discrimination—both within our organization and in the lives of those we serve.

We recognize that oppression can impact individuals in many ways, including but not limited to race, age, gender identity, sexual orientation, ability, religion, socioeconomic status, appearance, and country of origin. These experiences can affect not only a person's mental health and recovery journey but also their sense of safety and belonging.

We are dedicated to creating an environment rooted in compassion, equity, and respect—where every individual feels seen, heard, and valued. Through ongoing education, accountability, and collective action, we strive to build a culture that promotes healing, dignity, and respect for all.



Strategic Pillars



Fuel the Mission

Growing and Diversifying Revenue: We will grow and diversify our revenues to create a more sustainable financial model and enable more people to experience recovery.



Optimize our Facility Footprint

Unlocking Value and Ensuring Fit for Purpose: We will unlock the value of our assets to ensure our facility footprint optimizes our cost structure and enhances the client experience.



Deepen Program Impact

Enhancing our Programs to Improve Quality: We will enhance our programs to improve quality and strengthen the client experience.



Strengthen Organizational Effectiveness

Investing in People and Systems: We will invest in our culture, people and systems for effective collaboration and deeper engagement.

The staff took me in as one of their own...

*I was treated with respect and dignity ... It was indeed difficult and dark at times, but I have no regrets and am exiting the program with solid tools. **CONOR, RENASCENT ALUMNI***

Three Year Goals



Fuel the Mission

Fund-raising revenues increased

by 35% to reach annual revenue of \$1 million.

Ministry of Health Funding increased

by 20% or \$600k base funding for 30 existing Live-In MOH beds.

Other Funders/Fee for Service Program revenues increased

by 20%, or \$1 million.



Optimize our Facility Footprint

Isabella Street property sold and value invested to grow funds for the mission.

Interim spaces in place/leased for Family Services, Foundation, administrative functions.

New properties and/or facilities in place or under development.



Deepen Program Impact

30 publicly-available beds protected and maintained for Ontarians.

Quality Standards and Improvements:

Successful Accreditation
Metric driven
Continuous Quality Improvement framework

Program Integration:

Increase program accessibility and reduction of barriers.
Family, Continuing Care, Live-In and Virtual Intensive treatment programs integrated for clients and staff.
Consolidated consistent program materials, practice guidelines and treatment planning.

Fully Digital Client information System:

Client information and communication completely contained within purpose-designed secure digital systems.



Strengthen Organizational Effectiveness

High performing and inspired teams experiencing year-over-year improvement in employee engagement.

Annual compensation increases.

Renascent 'One Team' development:

Town halls, cross-organizational learning opportunities
Simplified key processes

Effective communication and shared understanding of key processes

Cost savings through expense management and consolidated procurement.





Renascent[®]
The road to recovery starts here.